



User Guide

SQL Executor for Creatio

Samarasoft

Contents

- Introduction 3
- Granting access 4
- Console features 5

Introduction

SQL query console in Creatio interface is an auxiliary module for executing SQL scripts and queries directly in Creatio UI. This module is essential for any cloud-based application. The product is delivered "as is".

By executing SQL queries with this add-on, the user accepts responsibility for any effects it may have on the Creatio application performance and integrity, as well as the integrity of business data stored in Creatio. Follow the recommendations below to ensure the performance and integrity of your Creatio application.

1. Execute any **"heavy" SQL queries** or queries that select large volumes of data **during non-business hours only**.
2. **Test all SQL queries that modify data** by running them in a testing environment (test database) and double-check query results.
3. Use standard Creatio System Designer tools for any changes to the system data or data structure.

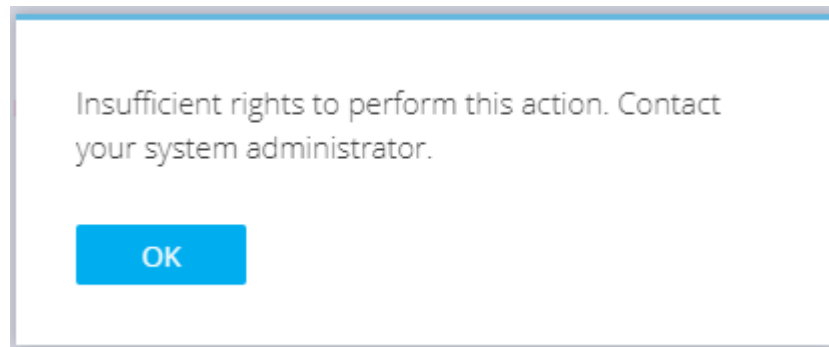
Granting access

Access to the SQL query console is managed by the "Access to "SQL query console" section" (CanUseSqlConsole) system operation. By default, the SQL query console is available to the "System administrators" role.

Go to the "System Designer," click "Operation permissions", select the "Access to "SQL query console" section" system operation, then add or remove users and roles who have access to it.

The changes will take effect on the next login. Any user who does not have permission to access the console will see an error pop-up (Fig. 1).

Fig. 1. Permission error pop-up



Console features

To open the SQL query console, go to the "System Designer" and click "SQL query console" under the "Admin area".

The upper part of the console UI (Fig. 2) contains a text editor with SQL syntax highlighting. You can run an SQL query entered in the text editor by clicking "Execute" or pressing "Ctrl + Enter".

The lower part of the SQL console will display SELECT query results, which you can sort by columns. The number of records affected by Insert/Update/Delete queries is shown at the top of the query results, under "ROWS AFFECTED".

Fig. 2. SQL query console interface

The screenshot displays the SQL query console interface. At the top, there is a search bar with the text "What can I do for you?". Below it, the "SQL console" title is visible. The main area contains a text editor with the following SQL query:

```
1 SELECT [Id], [Name] FROM [Account] WHERE [Name] LIKE '%technology%';
2
3 SELECT * FROM [Contact]
```

Below the query editor, the status "0 ROW(S) AFFECTED" is shown. The "Query execution time: 0 sec" is also displayed. The results section shows a table with the following data:

Id	Name
8c620a54-a69a-4c81-abcc-9f375b1b4397	Build Technologies
960750ac-19c0-4030-aa2e-9cf2626183b	Rubicon Technologies
b941bf91-5c7-4c9f-92b6-2898547c0056	Goldfish Technologies

Below the table, there is a search bar and a "Showing 1 to 3 of 3 entries" indicator. The bottom part of the interface shows a detailed table with columns: Id, ModifiedOn, CreatedOn, Name, Description, CreatedById, ModifiedById, AccountId, Dear, SalutationTypeId, GenderId, and OwnerId. The data rows are:

Id	ModifiedOn	CreatedOn	Name	Description	CreatedById	ModifiedById	AccountId	Dear	SalutationTypeId	GenderId	OwnerId
00b34750-2feb-4545-b233-153902326f3c	7/26/2019 2:24:19 PM	1/29/2019 3:00:00 AM	James Smith		76929f8c-7e15-4c64-bdb0-8dc62d583727	76929f8c-7e15-4c64-bdb0-8dc62d583727	ff7a089f-11e9-4ca9-bc30-2c76ad39e178	Smith	7426ffb3-56e6-df11-971b-001c60e938c6	eeac42ee-65b6-df11-831a-001e60e938c6	75929f8c-7e15-4c64-bdb0-8dc62d583727

Click "Show Query Log" to view which queries were executed and from which IPs. Click "Export to CSV" to export the query log. The query log is shown in the lower part of the SQL console window, replacing the query results.

The SQL console will show any SQL-related errors in the lower part of the window as well.